

WHY CHANGE?

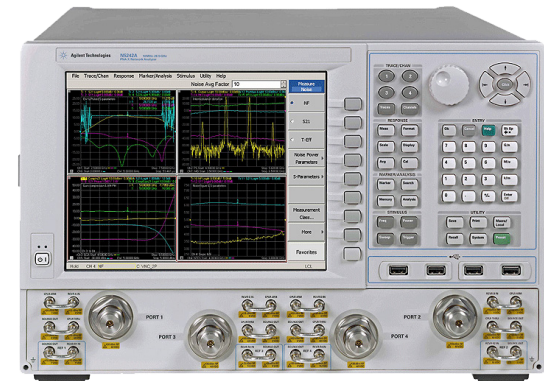
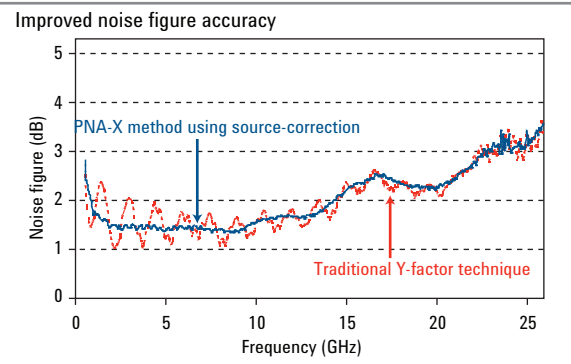
Top 3 Reasons to Upgrade to the Agilent PNA-X Microwave Network Analyzers*

*If you currently own one of these discontinued models: 8510A/B/C (Trade-In ID# T-WW-WN-005)

PREMIUM
TRADE-IN
SOLUTIONS

TOP 3 REASONS TO UPGRADE

1. **WIDEST RANGE OF ACTIVE DEVICE TEST APPLICATIONS AND CAPABILITIES.**
2. **HIGH SPEED, ACCURACY AND MEASUREMENT CONFIDENCE.**
3. **GET THE GREATEST IMPACT FOR YOUR CAPITAL EXPENDITURE WITH UP TO 35% CREDIT.**

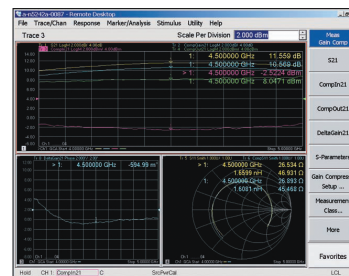


1. WIDEST RANGE OF ACTIVE DEVICE TEST APPLICATIONS AND CAPABILITIES.

We can help you:

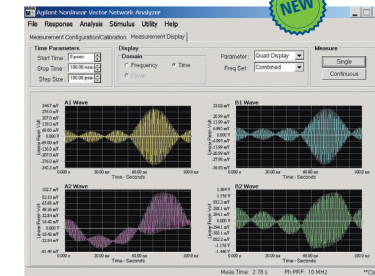
- **Improve efficiency** of active device testing through single connection multiple measurements:
- **Built-in source corrected noise figure measurement capability (optional)** – up to three times more accurate than a traditional NF analyzer.
- **Integrated second source (optional) and built-in combiner** provides two-tone intermodulation distortion (IMD) measurements on mixers and amplifiers – up to 100 times faster than using external source.

Gain compression



- Gain compression characterization application (See publication number 5989-7479EN).
- Power added efficiency (PAE) measurements (See publication number 5989-7293EN).

Non-linear analysis



- Non-linear vector network analysis.



Agilent Technologies

REFRESH YOUR TECHNOLOGY AT A LOWER COST

PREMIUM
TRADE-IN
SOLUTIONS

2. HIGH SPEED, ACCURACY AND MEASUREMENT CONFIDENCE.

We can help you:

- **Increase test** throughput with up to 50X faster sweep and up to 320X faster data transfer.
- **Simplify pulse measurements** with unique built-in pulse generators and modulators – up to 30 times faster than using external modulators and generators.
- **Improve test quality** with greater than 30 dB improvement in dynamic range.
- **Protect your software investment** by running existing 8510 code on the new PNA using the built-in code emulation feature.
- **“Sweep time” and “Data transfer time (ms)”** tables below Reason 2.

Sweep time

10 KHz IFBW, 10 dBm output power, 801 points	
8510	10 seconds
PNA-X 0.2 seconds	50X faster

Data transfer time (ms)

Number of points	MW PNA COM	MW PNA GPIB	8510 GPIB	Result
51	1	3	20	6 to 20 times faster
401	1	12	160	12 to 160 times faster
801	1	24	320	12 to 320 times faster

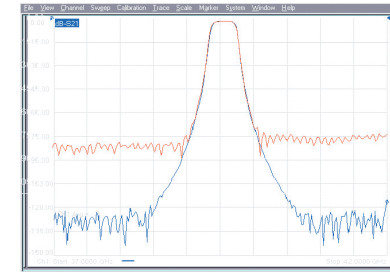
3. GET THE GREATEST IMPACT FOR YOUR CAPITAL EXPENDITURE WITH UP TO 35% CREDIT.

Until 30 June 2012 upgrade to a new N5242/N5244/N5245/N5247A PNA-X for less when you trade in any of the following network analyzers:

Trade-In model	Maximum Trade-In credit**
E8362C, E8363C, E8364C	35%
E8362B, E8363B, E8364B	25%
N5230A, N5230C	20%
E8362A, E8363A, E8364A	10%
8720ES, 8720ET, 8722ES, 8722ET	10%
8510C System (8510C + test set + source)	\$20k credit
8510B System (8510B + test set + source)	\$15k credit
8510A System (8510A + test set + source)	\$10k credit

** Credit values are approximate and vary by currency. Contact your Agilent sales representative to find out how much you can save.

Wider dynamic range



Upgrade TODAY

To Trade-In your 8510 network analyzer for the new PNA-X Series network analyzer, contact your Agilent sales representative or visit us online at www.agilent.com/find/trade-PNA-X

Restrictions prohibit or limit this program in some countries. Please check our list of countries eligible for Agilent Trade-In at www.agilent.com/find/trade. Product specifications and descriptions, model eligibility and potential credits are all subject to change without notice. www.agilent.com

© Agilent Technologies, Inc. 2011 Printed in USA, December 8, 2011 5989-8738EN

WWW.AGILENT.COM/FIND/TRADE



Agilent Technologies